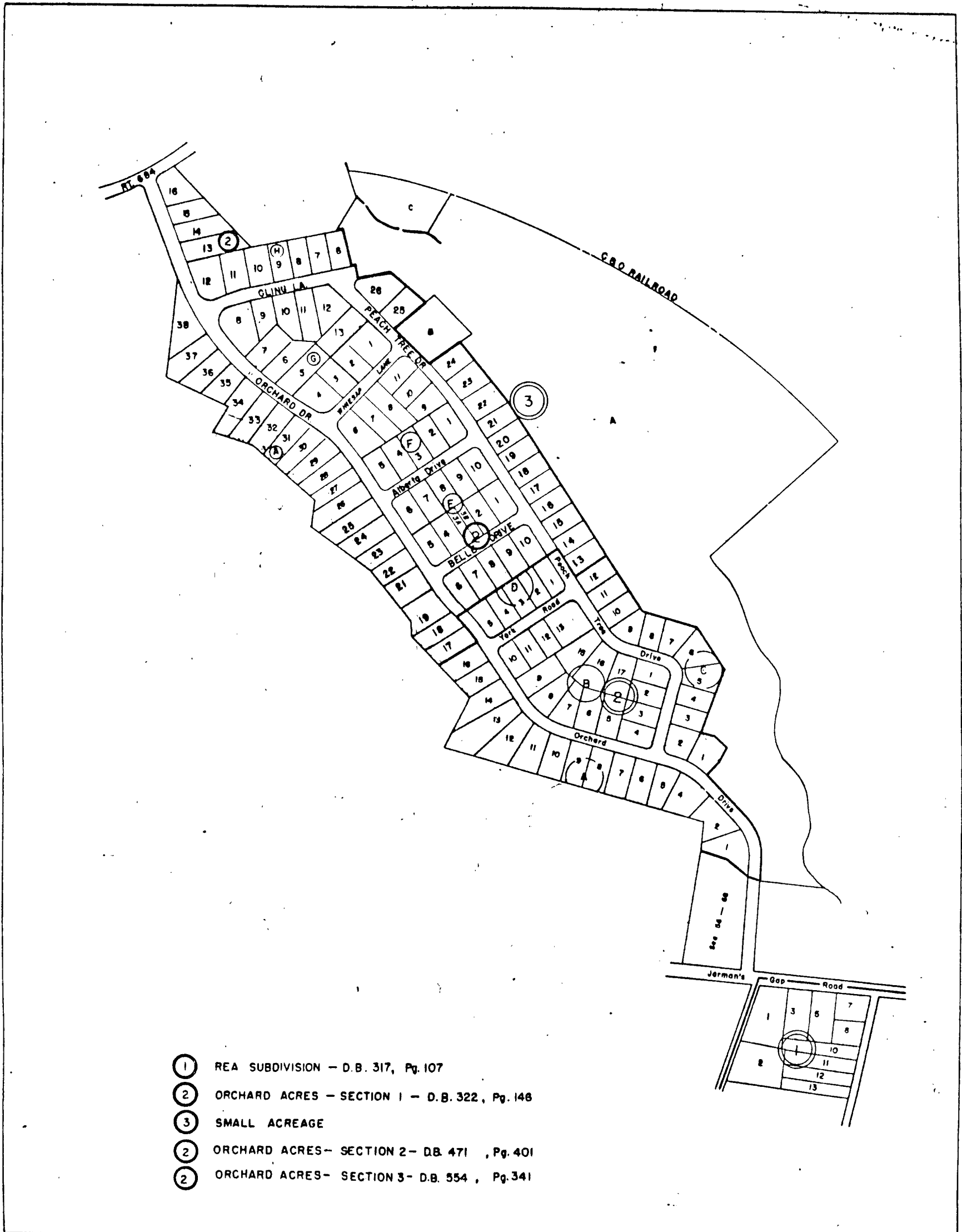


ALBEMARLE COUNTY



- ① REA SUBDIVISION - D.B. 317, Pg. 107
- ② ORCHARD ACRES - SECTION 1 - D.B. 322, Pg. 146
- ③ SMALL ACREAGE
- ② ORCHARD ACRES - SECTION 2 - D.B. 471, Pg. 401
- ② ORCHARD ACRES - SECTION 3 - D.B. 554, Pg. 341

SCALE IN FEET
0 100 200 300 400 500 600

WHITE HALL DISTRICT

SECTION 55-C